



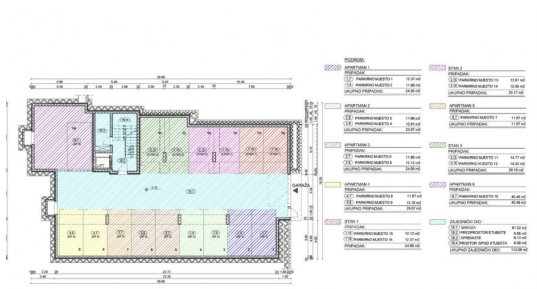
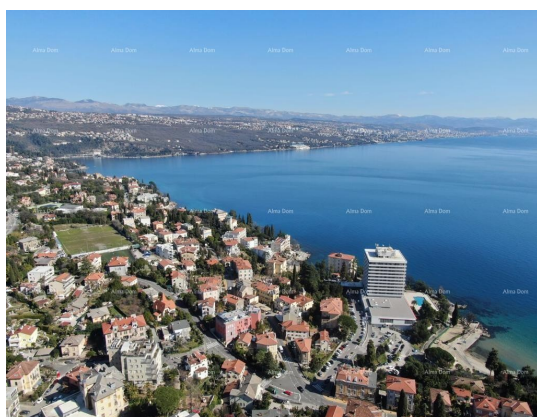
## ALMA DOM INVEST

Istarska ulica 8, 52100 Pula

mail: [azra@almadominvest.com](mailto:azra@almadominvest.com)

web: [www.almadominvest.com](http://www.almadominvest.com)

info: +44 7375 637471 | +385 98 420 885



<b>Code :</b>	15678
<b>Location :</b>	Opatija
<b>Building size :</b>	77.09 m <sup>2</sup>
<b>Lot size :</b>	0 m <sup>2</sup>
<b>Distance from center :</b>	500 m
<b>Distance from sea :</b>	750 m
<b>Seaview :</b>	Yes
<b>Floor :</b>	1
<b>Number of floors :</b>	4
<b>Number of rooms :</b>	2
<b>Number of bathrooms :</b>	1
<b>Year of construction :</b>	2023
<b>Energy efficiency :</b>	A+
<b>Garage :</b>	Yes
<b>Parking :</b>	Yes
<b>Air conditioning system :</b>	Yes
<b>Elevator :</b>	Yes

**Price :** 671.920 €

New in Offer!

Luxury residential and commercial unit of 9 apartments in Opatija.

Apartment 4 is located on the 1st floor of the building and will consist of an entrance hall, a kitchen with a living room and a dining room, 2 bedrooms, a bathroom, and a covered balcony.

The apartment has 2 parking spaces.

The construction of this project will begin on September 15, 2023, and the planned completion date is September 15, 2024.

The property is a 15-minute walk from the beach.

For more information, please contact:

Azra: + 385 91 611 5706

+385 98 420 885

[azra@almadominvest.com](mailto:azra@almadominvest.com)

### - APARTMAN 4:

POLOŽAJ	OZNAKA	NAZIV PROSTORIJIA POSEBNOG DIELIA NEKRETNINE	KORISNA POVRŠINA m <sup>2</sup>	UKUPNA POVRŠINA m <sup>2</sup>	Ocjena KORISNE VRIJEDNOSTI	KORISNA VRIJEDNOST PRIPADAJUĆI DIELI OVA ETAŽNIH CJELINA	UKUPNA KORISNA VRIJEDNOST
	<b>ŽUTA</b>	<b>APARTMAN 4</b>					
		<b>POSEBNI DIO</b>		<b>77,09</b>			<b>71,46</b>
1. KAT	4.1	Ulaz	8,67	77,09	1,00	8,67	71,46
	4.2	Kuhinja/blag./dn.boravak	31,88		1,00	31,88	
	4.3	Kupaonica	4,32		1,00	4,32	
	4.4	Soba	11,41		1,00	11,41	
	4.5	Soba	9,54		1,00	9,54	
	4.6	Balkon natkriven	11,27		0,50	5,64	
		<b>PRIPADAK</b>		<b>25,07</b>			<b>12,54</b>
		<b>ZATVORENI DIO</b>					
PODRUM	4.7	Parking mjesto 8	11,97	25,07	0,50	5,99	12,54
	4.8	Parking mjesto 9	13,10		0,50	6,55	