



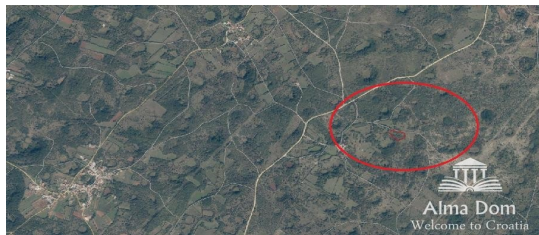
## ALMA DOM INVEST

Istarska ulica 8, 52100 Pula

mail: [azra@almadominvest.com](mailto:azra@almadominvest.com)

web: [www.almadominvest.com](http://www.almadominvest.com)

info: +44 7375 637471 | +385 98 420 885



<b>Code :</b>	10561
<b>Location :</b>	Marčana
<b>Building size :</b>	0 m2
<b>Lot size :</b>	45000 m2
<b>Distance from center :</b>	0 m
<b>Distance from sea :</b>	0 m
<b>Seaview :</b>	No
<b>Land :</b>	Building
<b>The degree of possible construction :</b>	Yes

<b>Price :</b>	120.000 €
----------------	-----------

Plot with access road along almost the entire edge of the plot + wave.

In a piece of 4.5 hectares of land.

In accordance with the spatial plan of the Municipality of Marčana, it is possible to build facilities for tourism, wineries, cheese dairies, oil mills and the like.

It is located only 100 m as the crow flies from the high voltage lines and about 200 m from the adrenaline park Glavani park.

INFO: [jelena@alma-nekretnine.com](mailto:jelena@alma-nekretnine.com)

+385 98 323 264